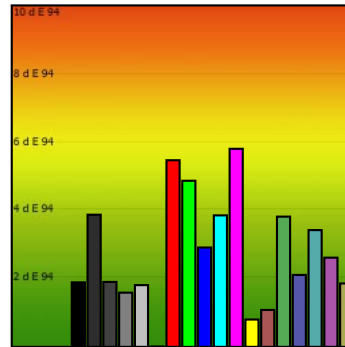
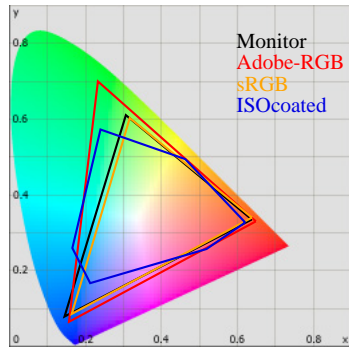


# Monitor Calibration Report

Date: 2010-7-12 16:45:35  
 Profile: C:/Windows/system32/spool/drivers/color/U2311H.icm



## Calibration:

	Target	Current	Deviation
Gamma	2.2	2.2	1%
Kelvin	6500	5240	19%
cd/m2	150	186	24%

## Whitepoint

XYZ	182.55	185.83	170.78
XYZ (normalized):	98.23	100.00	91.90
Luminance	185.8 Cd/m2		
Next Temperature	5240 Kelvin		
Assumed Target Whitepoint	5200 Kelvin		
Distance to assumed Target Whitepoint	14.9 deltaE		

## Blackpoint:

Luminance 0.26 Cd/m2

## Graybalance:

Color	Kelvin	Chroma	Gamma
17% heavy dark	5665	2.55	2.17
25% dark gray	5655	2.81	2.18
50% gray	5436	6.03	2.16
75% light gray	5421	8.37	2.10
100% white	5240	12.30	

Average Gamma = 2.15

## Profile Statistic:

Note: The deltaE calculation takes the blackpoint into account!  
Based on chromatic adaptation Bradford

Color	R	G	B	L	a	b	dE	dE94
0% black	0	0	0	1.3	-0.1	-1.4	1.9	1.9
17% heavy dark	45	45	45	17.9	-1.4	-0.7	3.9	3.9
25% dark gray	64	64	64	26.6	-0.6	-1.8	1.9	1.9
50% gray	128	128	128	54.3	-0.4	-1.5	1.6	1.6
75% light gray	192	192	192	78.6	-0.8	-1.6	1.8	1.8
100% white	255	255	255	100.0	0.0	0.0	0.0	0.0
red	255	0	0	58.5	81.1	72.0	7.1	5.5
green	0	255	0	84.7	-86.9	80.6	12.7	4.9
blue	0	0	255	33.8	45.4	-105.3	8.6	2.9
cyan	0	255	255	88.7	-61.0	-17.5	11.3	3.9
magenta	255	0	255	65.2	85.6	-49.9	12.4	5.8
yellow	255	255	0	96.7	-11.5	95.5	2.1	0.8
pastell-red	170	85	85	48.6	35.9	17.6	2.1	1.1
pastell-green	85	170	85	62.7	-45.4	34.6	8.0	3.8
pastell-blue	85	85	170	41.0	12.0	-46.9	3.3	2.1
pastell-cyan	85	170	170	64.9	-33.7	-10.0	7.6	3.4
pastell-magenta	170	85	170	52.2	47.3	-28.9	5.7	2.6
pastell-yellow	170	170	85	69.0	-10.0	43.4	3.2	1.9
Average							5.3	2.8
Maximum							12.7	5.8

## Metric:

	0%	50%	100%
X	0.3	40.5	182.6
Y	0.3	41.3	185.8
Z	0.4	39.4	170.8
K		5436	5240