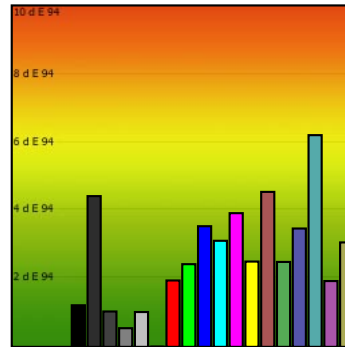
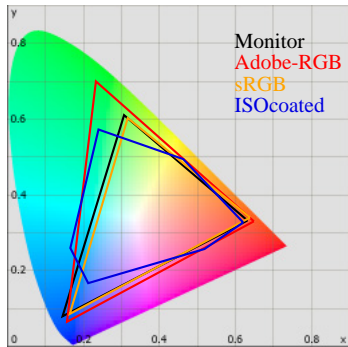


# Monitor Calibration Report

Date: 2010-7-12 16:39:03  
 Profile: C:/Windows/system32/spool/drivers/color/U2311H.icm



## Calibration:

	Target	Current	Deviation
Gamma	2.2	2.2	1%
Kelvin	6500	6324	3%
cd/m2	150	198	32%

## Whitepoint

XYZ	190.25 198.32 213.51
XYZ (normalized):	95.93 100.00 107.66
Luminance	198.3 Cd/m2
Next Temperature	6324 Kelvin
Assumed Target Whitepoint	6300 Kelvin
Distance to assumed Target Whitepoint	1.9 deltaE

## Blackpoint:

Luminance 0.22 Cd/m2

## Graybalance:

Color	Kelvin	Chroma	Gamma
17% heavy dark	6374	0.53	2.21
25% dark gray	6573	0.39	2.20
50% gray	6378	0.65	2.21
75% light gray	6338	1.13	2.22
100% white	6324	1.73	

Average Gamma = 2.21

## Profile Statistic:

Note: The deltaE calculation takes the blackpoint into account!  
Based on chromatic adaptation CAT02

Color	R	G	B	L	a	b	dE	dE94
0% black	0	0	0	1.0	-0.1	-0.7	1.2	1.2
17% heavy dark	45	45	45	17.0	-0.6	0.3	4.4	4.4
25% dark gray	64	64	64	26.3	-1.0	-0.3	1.0	1.0
50% gray	128	128	128	53.7	-0.4	-0.1	0.5	0.5
75% light gray	192	192	192	78.0	-0.9	0.5	1.0	1.0
100% white	255	255	255	100.0	0.0	0.0	0.0	0.0
red	255	0	0	54.9	78.5	67.5	4.5	1.9
green	0	255	0	85.7	-79.1	88.6	7.9	2.4
blue	0	0	255	32.9	41.6	-100.9	13.9	3.5
cyan	0	255	255	91.0	-57.8	-11.2	7.9	3.1
magenta	255	0	255	63.6	83.5	-52.5	10.6	3.9
yellow	255	255	0	96.0	-9.7	102.4	9.2	2.5
pastell-red	170	85	85	48.1	48.0	17.7	12.8	4.5
pastell-green	85	170	85	62.5	-41.5	37.8	5.2	2.5
pastell-blue	85	85	170	41.0	8.7	-44.8	5.7	3.5
pastell-cyan	85	170	170	68.5	-40.8	-8.7	14.4	6.2
pastell-magenta	170	85	170	50.9	45.6	-28.9	4.0	1.9
pastell-yellow	170	170	85	68.6	-7.2	51.1	8.7	3.1
Average							6.3	2.6
Maximum							14.4	6.2

## Metric:

	0%	50%	100%
X	0.2	41.1	190.2
Y	0.2	43.0	198.3
Z	0.3	46.4	213.5
K		6378	6324