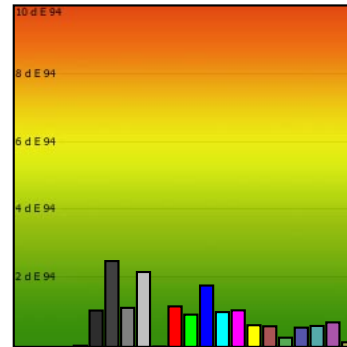
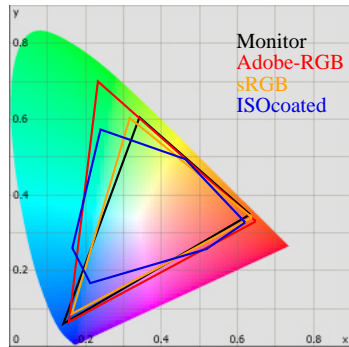


Monitor Calibration Report

Date: 2010-5-2 3:52:25
 Profile: C:/Windows/system32/spool/drivers/color/02.05.10-6500K-22-120cd.icc



Calibration:

	Target	Current	Deviation
Gamma	2.2	2.2	2%
Kelvin	6500	6598	2%
cd/m2	120	121	1%

Whitepoint

XYZ	115.45	121.36	134.10
XYZ (normalized):	95.13	100.00	110.50
Luminance	121.4 Cd/m2		
Next Temperature	6598 Kelvin		
Assumed Target Whitepoint	6600 Kelvin		
Distance to assumed Target Whitepoint	0.9 deltaE		

Blackpoint:

Luminance 0.24 Cd/m2

Graybalance:

Color	Kelvin	Chroma	Gamma
17% heavy dark	6451	1.10	2.22
25% dark gray	6555	2.65	2.23
50% gray	6443	0.54	2.22
75% light gray	6474	1.64	2.24
100% white	6598	1.00	

Average Gamma = 2.23

Profile Statistic:

Note: The deltaE calculation takes the blackpoint into account!

Based on chromatic adaptation Bradford

Color	R	G	B	L	a	b	dE	dE94
0% black	0	0	0	1.8	-0.4	-1.1	0.0	0.0
17% heavy dark	45	45	45	17.1	0.9	-0.2	1.1	1.1
25% dark gray	64	64	64	25.7	2.0	-1.1	2.5	2.5
50% gray	128	128	128	53.9	-0.2	1.1	1.1	1.1
75% light gray	192	192	192	78.2	-1.2	1.8	2.2	2.2
100% white	255	255	255	100.0	0.0	0.0	0.0	0.0
red	255	0	0	52.1	70.7	76.6	2.4	1.2
green	0	255	0	87.5	-63.6	98.2	3.1	0.9
blue	0	0	255	30.4	60.7	-113.8	2.9	1.8
cyan	0	255	255	90.5	-39.6	-15.8	1.8	1.0
magenta	255	0	255	58.9	83.7	-65.1	2.5	1.1
yellow	255	255	0	97.2	-15.3	112.1	3.7	0.6
pastell-red	170	85	85	46.6	31.0	17.2	1.2	0.6
pastell-green	85	170	85	63.3	-33.6	39.9	0.3	0.3
pastell-blue	85	85	170	39.6	18.1	-49.1	0.7	0.6
pastell-cyan	85	170	170	64.8	-21.8	-8.5	0.9	0.6
pastell-magenta	170	85	170	49.0	40.2	-33.0	1.4	0.7
pastell-yellow	170	170	85	68.6	-8.6	48.3	0.2	0.1
Average							1.6	0.9
Maximum							3.7	2.5

Metric:

	0%	50%	100%
X	0.2	25.1	115.4
Y	0.2	26.5	121.4
Z	0.4	28.5	134.1
K		6443	6598