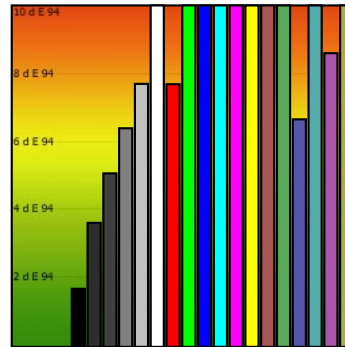
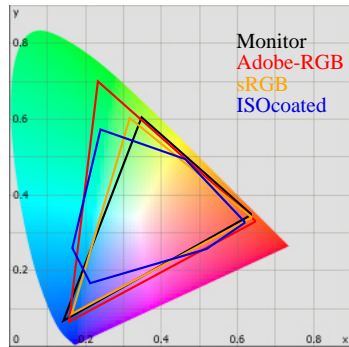


# Monitor Calibration Report

Date: 2010-5-2 2:59:33  
 Profile: C:/Windows/system32/spool/drivers/color/V2420HDDMI.icm



## Calibration:

	Target	Current	Deviation
Gamma	2.2	1.9	14%
Kelvin	6500	7781	20%
cd/m2	150	227	51%

## Whitepoint

XYZ	206.75 227.00 271.93
XYZ (normalized):	91.08 100.00 119.79
Luminance	227.0 Cd/m2
Next Temperature	7781 Kelvin
Assumed Target Whitepoint	7800 Kelvin
Distance to assumed Target Whitepoint	10.1 deltaE

## Blackpoint:

Luminance 0.36 Cd/m2

## Graybalance:

Color	Kelvin	Chroma	Gamma
17% heavy dark	8687	4.51	2.01
25% dark gray	8387	5.05	1.94
50% gray	8695	8.94	1.88
75% light gray	8878	12.90	1.46
100% white	7781	9.57	

Average Gamma = 1.82

## Profile Statistic:

Note: The deltaE calculation takes the blackpoint into account!

Based on chromatic adaptation von Kries

Color	R	G	B	L	a	b	dE	dE94
0% black	0	0	0	1.4	0.1	-0.9	1.7	1.7
17% heavy dark	45	45	45	20.2	1.1	-2.4	4.1	3.6
25% dark gray	64	64	64	31.1	1.0	-2.2	5.9	5.1
50% gray	128	128	128	58.1	1.1	-4.3	8.3	6.4
75% light gray	192	192	192	83.1	2.1	-6.9	10.4	7.7
100% white	255	255	255	100.0	0.0	0.0	19.5	19.5
red	255	0	0	56.4	83.5	84.6	26.4	7.7
green	0	255	0	95.3	-49.6	114.4	33.0	12.5
blue	0	0	255	37.4	33.1	-104.1	45.0	11.2
cyan	0	255	255	99.2	-36.1	-1.3	31.2	18.8
magenta	255	0	255	64.9	82.1	-57.1	29.6	10.7
yellow	255	255	0	104.6	0.8	127.9	39.0	12.9
pastell-red	170	85	85	47.4	53.9	30.1	37.3	14.9
pastell-green	85	170	85	72.7	-37.8	54.7	26.7	12.1
pastell-blue	85	85	170	38.4	12.8	-67.4	10.6	6.7
pastell-cyan	85	170	170	76.2	-25.3	-5.1	19.0	14.4
pastell-magenta	170	85	170	53.7	51.2	-37.7	16.4	8.6
pastell-yellow	170	170	85	78.3	0.3	66.7	34.4	15.1
Average							22.1	10.5
Maximum							45.0	19.5

## Metric:

	0%	50%	100%
X	0.3	55.0	206.7
Y	0.4	59.2	227.0
Z	0.6	78.4	271.9
K		8695	7781