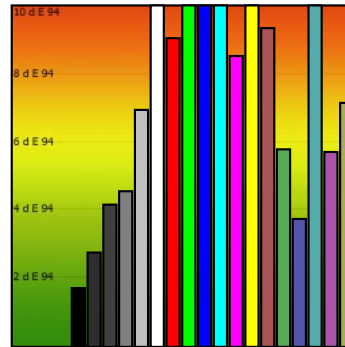
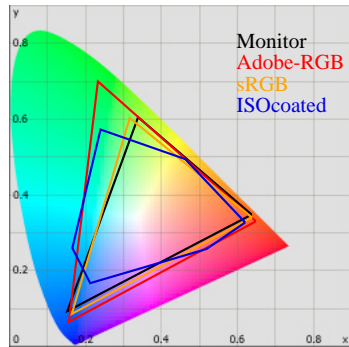


# Monitor Calibration Report

Date: 2010-5-2 2:57:45  
 Profile: C:/Windows/system32/spool/drivers/color/V2420HDDMI.icm



## Calibration:

	Target	Current	Deviation
Gamma	2.2	1.8	17%
Kelvin	6500	7462	15%
cd/m2	150	233	55%

## Whitepoint

XYZ	213.67 232.74 272.25
XYZ (normalized):	91.81 100.00 116.97
Luminance	232.7 Cd/m2
Next Temperature	7462 Kelvin
Assumed Target Whitepoint	7500 Kelvin
Distance to assumed Target Whitepoint	8.1 deltaE

## Blackpoint:

Luminance 0.36 Cd/m2

## Graybalance:

Color	Kelvin	Chroma	Gamma
17% heavy dark	10577	7.57	1.99
25% dark gray	10817	9.45	2.05
50% gray	9316	11.61	1.83
75% light gray	8657	12.26	1.57
100% white	7462	7.51	

Average Gamma = 1.86

## Profile Statistic:

Note: The deltaE calculation takes the blackpoint into account!

Based on chromatic adaptation Bradford

Color	R	G	B	L	a	b	dE	dE94
0% black	0	0	0	1.4	0.2	-1.0	1.7	1.7
17% heavy dark	45	45	45	19.7	2.2	-5.9	3.0	2.8
25% dark gray	64	64	64	27.3	2.6	-7.4	4.4	4.2
50% gray	128	128	128	57.9	2.7	-8.4	5.7	4.6
75% light gray	192	192	192	81.6	2.9	-8.0	9.4	6.9
100% white	255	255	255	100.0	0.0	-0.0	19.5	19.5
red	255	0	0	57.5	78.9	87.9	27.2	9.0
green	0	255	0	77.8	-51.4	88.8	19.4	12.4
blue	0	0	255	41.5	34.9	-96.6	48.7	12.9
cyan	0	255	255	98.0	-38.1	-3.5	28.8	17.2
magenta	255	0	255	61.9	85.3	-60.5	25.5	8.5
yellow	255	255	0	90.8	3.7	107.6	27.9	12.0
pastell-red	170	85	85	48.5	45.2	17.6	22.6	9.3
pastell-green	85	170	85	62.3	-31.3	34.9	8.2	5.8
pastell-blue	85	85	170	45.8	13.2	-54.0	9.3	3.7
pastell-cyan	85	170	170	75.3	-26.5	-8.7	16.0	12.2
pastell-magenta	170	85	170	50.5	47.3	-41.5	11.0	5.7
pastell-yellow	170	170	85	71.4	-2.6	43.0	12.3	7.1
Average							16.7	8.6
Maximum							48.7	19.5

## Metric:

	0%	50%	100%
X	0.4	57.7	213.7
Y	0.4	60.5	232.7
Z	0.6	85.6	272.2
K		9316	7462