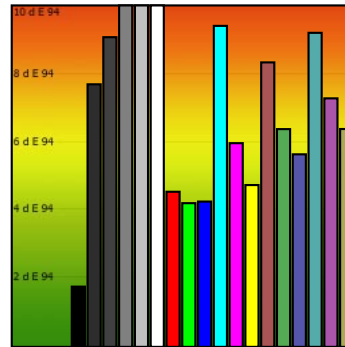
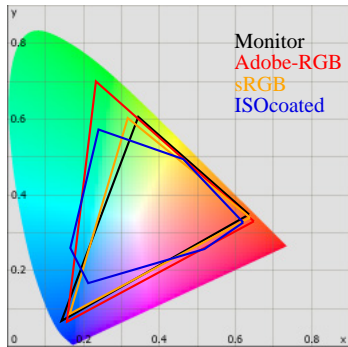


# Monitor Calibration Report

Date: 2010-5-2 2:55:45  
 Profile: C:/Windows/system32/spool/drivers/color/V2420HDDMI.icm



## Calibration:

	Target	Current	Deviation
Gamma	2.2	2.2	2%
Kelvin	6500	6479	0%
cd/m2	150	149	0%

## Whitepoint

XYZ	142.26 149.37 162.61
XYZ (normalized):	95.24 100.00 108.86
Luminance	149.4 Cd/m2
Next Temperature	6479 Kelvin
Assumed Target Whitepoint	6500 Kelvin
Distance to assumed Target Whitepoint	0.0 deltaE

## Blackpoint:

Luminance 0.24 Cd/m2

## Graybalance:

Color	Kelvin	Chroma	Gamma
17% heavy dark	6163	1.46	2.23
25% dark gray	6200	1.08	2.24
50% gray	6492	0.38	2.22
75% light gray	6542	1.22	2.20
100% white	6479	0.35	

Average Gamma = 2.22

## Profile Statistic:

Note: The deltaE calculation takes the blackpoint into account!  
Based on chromatic adaptation Bradford

Color	R	G	B	L	a	b	dE	dE94
0% black	0	0	0	1.4	-0.1	-1.0	1.8	1.8
17% heavy dark	45	45	45	17.2	-0.5	1.4	8.2	7.7
25% dark gray	64	64	64	26.0	0.0	1.1	9.7	9.1
50% gray	128	128	128	53.6	0.1	-0.2	12.7	11.9
75% light gray	192	192	192	77.7	0.5	-0.9	15.5	13.2
100% white	255	255	255	100.0	0.0	0.0	19.5	19.5
red	255	0	0	52.6	71.5	78.9	15.4	4.5
green	0	255	0	87.3	-63.6	99.3	12.8	4.2
blue	0	0	255	33.2	52.9	-110.9	25.0	4.3
cyan	0	255	255	90.8	-40.4	-15.6	16.5	9.4
magenta	255	0	255	60.3	80.6	-64.5	21.9	6.0
yellow	255	255	0	96.9	-13.7	113.4	18.3	4.7
pastell-red	170	85	85	46.4	31.2	17.7	13.9	8.3
pastell-green	85	170	85	62.7	-34.7	39.9	11.6	6.4
pastell-blue	85	85	170	39.0	17.8	-49.9	11.9	5.6
pastell-cyan	85	170	170	64.2	-22.2	-9.3	13.1	9.2
pastell-magenta	170	85	170	48.9	40.3	-33.1	14.8	7.3
pastell-yellow	170	170	85	68.1	-8.4	48.5	13.7	6.4
Average							14.2	7.8
Maximum							25.0	19.5

## Metric:

	0%	50%	100%
X	0.2	30.7	142.3
Y	0.2	32.2	149.4
Z	0.4	35.2	162.6
K		6492	6479