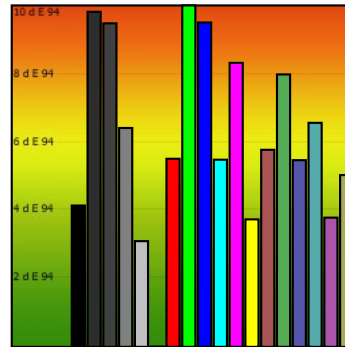
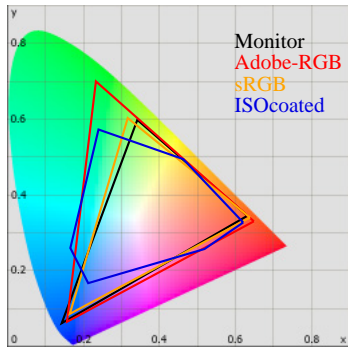


# Monitor Calibration Report

Date: 2010-2-12 22:55:19  
 Profile: C:/Windows/system32/spool/drivers/color/05.02.10-6500K-22-150cd.icc



## Calibration:

	Target	Current	Deviation
Gamma	2.2	1.9	15%
Kelvin	6500	6047	7%
cd/m2	150	194	29%

## Whitepoint

XYZ	183.56 194.04 194.97
XYZ (normalized):	94.60 100.00 100.48
Luminance	194.0 Cd/m2
Next Temperature	6047 Kelvin
Assumed Target Whitepoint	6000 Kelvin
Distance to assumed Target Whitepoint	5.0 deltaE

## Blackpoint:

Luminance 1.10 Cd/m2

## Graybalance:

Color	Kelvin	Chroma	Gamma
17% heavy dark	5875	3.43	1.80
25% dark gray	5862	4.14	1.81
50% gray	5954	4.91	1.85
75% light gray	5999	5.45	1.89
100% white	6047	5.33	

Average Gamma = 1.84

## Profile Statistic:

Note: The deltaE calculation takes the blackpoint into account!  
Based on chromatic adaptation Bradford

Color	R	G	B	L	a	b	dE	dE94
0% black	0	0	0	5.1	0.8	-2.2	4.2	4.1
17% heavy dark	45	45	45	27.0	-0.7	1.3	9.8	9.8
25% dark gray	64	64	64	35.8	-0.7	1.7	9.5	9.5
50% gray	128	128	128	60.4	-0.7	1.3	6.4	6.4
75% light gray	192	192	192	81.2	-0.5	0.9	3.1	3.1
100% white	255	255	255	100.0	0.0	0.0	0.0	0.0
red	255	0	0	52.7	71.9	71.6	10.4	5.5
green	0	255	0	88.2	-64.3	94.1	26.6	10.4
blue	0	0	255	30.2	61.2	-113.6	29.0	9.5
cyan	0	255	255	90.9	-40.8	-14.9	16.6	5.5
magenta	255	0	255	58.7	84.4	-64.8	16.6	8.3
yellow	255	255	0	97.4	-14.7	107.7	18.7	3.7
pastell-red	170	85	85	52.7	27.2	16.0	11.5	5.8
pastell-green	85	170	85	67.9	-32.6	36.4	10.9	8.0
pastell-blue	85	85	170	46.4	13.7	-42.6	6.1	5.5
pastell-cyan	85	170	170	69.1	-22.0	-6.6	10.4	6.6
pastell-magenta	170	85	170	54.5	35.7	-28.7	5.9	3.8
pastell-yellow	170	170	85	72.8	-8.8	44.3	6.0	5.0
Average							11.2	6.1
Maximum							29.0	10.4

## Metric:

	0%	50%	100%
X	1.1	52.0	183.6
Y	1.1	55.3	194.0
Z	1.4	54.0	195.0
K		5954	6047