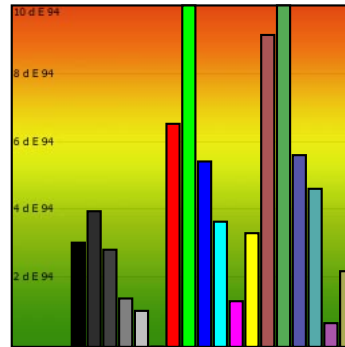
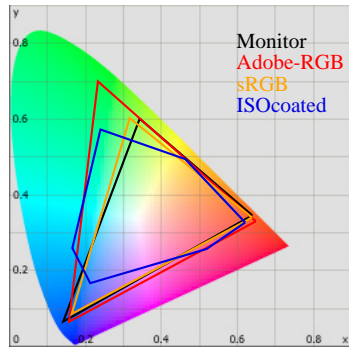


Monitor Calibration Report

Date: 2010-2-12 23:40:02
 Profile: C:/Windows/system32/spool/drivers/color/BenQ V2400 Eco 12.02.10-6500K-22-150cd.icc



Calibration:

	Target	Current	Deviation
Gamma	2.2	2.1	3%
Kelvin	6500	8170	26%
cd/m2	150	165	10%

Whitepoint

XYZ	154.63 164.90 211.67
XYZ (normalized):	93.77 100.00 128.36
Luminance	164.9 Cd/m2
Next Temperature	8170 Kelvin
Assumed Target Whitepoint	8200 Kelvin
Distance to assumed Target Whitepoint	12.6 deltaE

Blackpoint:

Luminance 0.72 Cd/m2

Graybalance:

Color	Kelvin	Chroma	Gamma
17% heavy dark	7629	2.91	2.35
25% dark gray	8219	4.33	2.28
50% gray	8520	8.07	2.12
75% light gray	8369	10.25	2.08
100% white	8170	11.50	

Average Gamma = 2.21

Profile Statistic:

Note: The deltaE calculation takes the blackpoint into account!
Based on chromatic adaptation Bradford

Color	R	G	B	L	a	b	dE	dE94
0% black	0	0	0	3.9	-1.0	0.8	3.1	3.1
17% heavy dark	45	45	45	16.5	-1.7	1.9	4.0	4.0
25% dark gray	64	64	64	26.0	-2.0	0.8	2.8	2.8
50% gray	128	128	128	55.2	-0.9	-0.8	1.4	1.4
75% light gray	192	192	192	79.0	-0.5	-0.8	1.1	1.1
100% white	255	255	255	100.0	0.0	0.0	0.0	0.0
red	255	0	0	59.3	81.7	91.1	24.4	6.5
green	0	255	0	97.3	-60.9	108.4	21.4	10.5
blue	0	0	255	36.2	53.2	-114.4	8.9	5.4
cyan	0	255	255	94.2	-36.9	-12.1	5.2	3.7
magenta	255	0	255	60.4	84.9	-61.8	4.1	1.3
yellow	255	255	0	97.1	-7.1	111.0	10.8	3.3
pastell-red	170	85	85	49.2	45.3	37.0	25.1	9.1
pastell-green	85	170	85	71.2	-46.0	64.5	30.3	11.0
pastell-blue	85	85	170	40.6	23.0	-68.0	20.9	5.6
pastell-cyan	85	170	170	69.5	-25.4	-10.5	6.0	4.6
pastell-magenta	170	85	170	49.6	36.9	-31.1	1.8	0.7
pastell-yellow	170	170	85	71.1	-6.6	47.1	2.6	2.2
Average							9.6	4.2
Maximum							30.3	11.0

Metric:

	0%	50%	100%
X	0.6	35.5	154.6
Y	0.7	38.1	164.9
Z	0.8	49.9	211.7
K		8520	8170