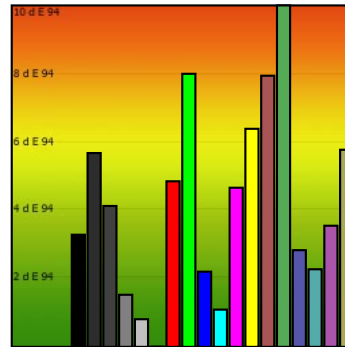
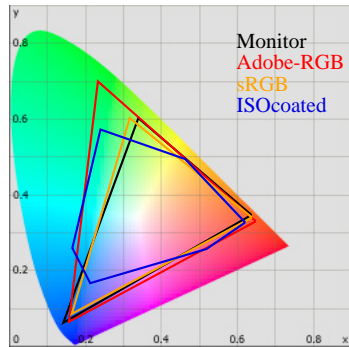


# Monitor Calibration Report

Date: 2010-2-12 23:38:21  
 Profile: C:/Windows/system32/spool/drivers/color/BenQ V2400 Eco 12.02.10-6500K-22-150cd.icc



## Calibration:

	Target	Current	Deviation
Gamma	2.2	2.3	3%
Kelvin	6500	8551	32%
cd/m2	150	159	6%

## Whitepoint

XYZ	151.53 159.28 213.88
XYZ (normalized):	95.14 100.00 134.28
Luminance	159.3 Cd/m2
Next Temperature	8551 Kelvin
Assumed Target Whitepoint	8600 Kelvin
Distance to assumed Target Whitepoint	14.8 deltaE

## Blackpoint:

Luminance 0.59 Cd/m2

## Graybalance:

Color	Kelvin	Chroma	Gamma
17% heavy dark	7612	2.33	2.47
25% dark gray	8167	3.87	2.38
50% gray	8416	7.89	2.25
75% light gray	8463	11.17	2.24
100% white	8551	14.48	

Average Gamma = 2.34

## Profile Statistic:

Note: The deltaE calculation takes the blackpoint into account!  
Based on chromatic adaptation Bradford

Color	R	G	B	L	a	b	dE	dE94
0% black	0	0	0	3.3	-0.9	0.6	3.3	3.3
17% heavy dark	45	45	45	14.6	-1.5	2.3	5.7	5.7
25% dark gray	64	64	64	24.3	-1.4	1.4	4.1	4.1
50% gray	128	128	128	53.4	-0.8	0.8	1.5	1.5
75% light gray	192	192	192	77.9	-0.3	0.5	0.8	0.8
100% white	255	255	255	100.0	0.0	-0.0	0.0	0.0
red	255	0	0	57.5	78.8	88.5	20.3	4.8
green	0	255	0	94.9	-62.7	105.9	17.9	8.0
blue	0	0	255	32.2	52.6	-108.2	8.5	2.2
cyan	0	255	255	90.7	-36.9	-14.5	2.9	1.1
magenta	255	0	255	60.5	84.0	-50.9	12.2	4.7
yellow	255	255	0	96.8	1.3	112.9	18.5	6.4
pastell-red	170	85	85	48.7	48.8	31.1	23.5	7.9
pastell-green	85	170	85	68.7	-45.7	71.9	36.3	11.2
pastell-blue	85	85	170	40.0	13.2	-52.4	5.7	2.8
pastell-cyan	85	170	170	66.3	-25.7	-9.7	4.5	2.3
pastell-magenta	170	85	170	49.5	48.6	-35.5	10.8	3.5
pastell-yellow	170	170	85	68.5	-3.2	62.5	16.7	5.8
Average							10.7	4.2
Maximum							36.3	11.2

## Metric:

	0%	50%	100%
X	0.5	32.2	151.5
Y	0.6	34.2	159.3
Z	0.7	45.0	213.9
K		8416	8551