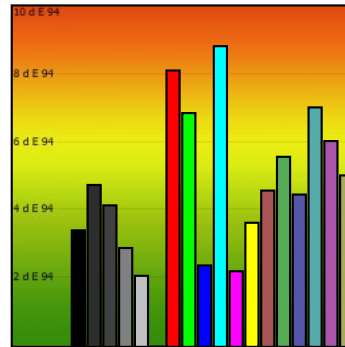
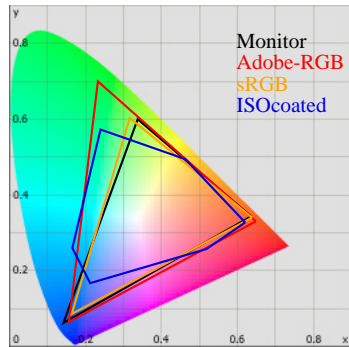


Monitor Calibration Report

Date: 2010-2-12 23:19:20
 Profile: C:/Windows/system32/spool/drivers/color/BenQ V2400 Eco 12.02.10-6500K-22-150cd.icc



Calibration:

	Target	Current	Deviation
Gamma	2.2	2.2	1%
Kelvin	6500	8825	36%
cd/m2	150	138	8%

Whitepoint

XYZ	129.06 138.45 185.68
XYZ (normalized):	93.22 100.00 134.12
Luminance	138.4 Cd/m2
Next Temperature	8825 Kelvin
Assumed Target Whitepoint	8800 Kelvin
Distance to assumed Target Whitepoint	15.8 deltaE

Blackpoint:

Luminance 0.62 Cd/m2

Graybalance:

Color	Kelvin	Chroma	Gamma
17% heavy dark	7800	4.89	2.21
25% dark gray	8134	5.15	2.26
50% gray	8536	8.08	2.21
75% light gray	8570	10.82	2.19
100% white	8825	14.75	

Average Gamma = 2.21

Profile Statistic:

Note: The deltaE calculation takes the blackpoint into account!
Based on chromatic adaptation Bradford

Color	R	G	B	L	a	b	dE	dE94
0% black	0	0	0	4.0	-1.4	1.2	3.5	3.4
17% heavy dark	45	45	45	19.2	-3.3	3.4	4.7	4.7
25% dark gray	64	64	64	26.9	-2.9	2.8	4.2	4.1
50% gray	128	128	128	54.7	-2.2	1.9	2.9	2.9
75% light gray	192	192	192	78.7	-1.2	1.6	2.1	2.1
100% white	255	255	255	100.0	0.0	0.0	0.0	0.0
red	255	0	0	61.3	84.6	89.5	25.5	8.1
green	0	255	0	93.2	-57.8	102.6	15.3	6.8
blue	0	0	255	33.3	55.6	-111.6	5.0	2.4
cyan	0	255	255	95.4	-38.6	-2.5	13.4	8.8
magenta	255	0	255	61.9	87.6	-67.7	8.5	2.2
yellow	255	255	0	100.6	-13.4	114.3	11.7	3.6
pastell-red	170	85	85	48.2	41.3	20.3	12.0	4.6
pastell-green	85	170	85	67.5	-36.7	49.9	12.9	5.6
pastell-blue	85	85	170	42.1	13.8	-58.6	11.1	4.5
pastell-cyan	85	170	170	67.5	-24.2	0.2	9.3	7.0
pastell-magenta	170	85	170	50.7	54.4	-47.0	22.1	6.0
pastell-yellow	170	170	85	70.2	-9.4	63.3	16.8	5.0
Average							10.0	4.6
Maximum							25.5	8.8

Metric:

	0%	50%	100%
X	0.5	28.4	129.1
Y	0.6	31.3	138.4
Z	0.7	40.0	185.7
K		8536	8825