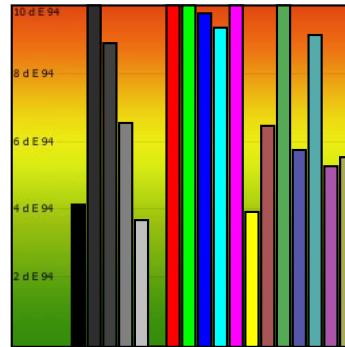
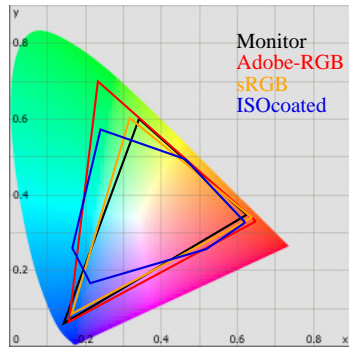


Monitor Calibration Report

Date: 2010-2-12 22:42:47
 Profile: C:/Windows/system32/spool/drivers/color/05.02.10-6500K-22-150cd.icc



Calibration:

	Target	Current	Deviation
Gamma	2.2	1.9	16%
Kelvin	6500	6875	6%
cd/m2	150	110	26%

Whitepoint

XYZ	98.25 110.31 114.89
XYZ (normalized):	89.06 100.00 104.15
Luminance	110.3 Cd/m2
Next Temperature	6875 Kelvin
Assumed Target Whitepoint	6900 Kelvin
Distance to assumed Target Whitepoint	3.5 deltaE

Blackpoint:

Luminance 0.67 Cd/m2

Graybalance:

Color	Kelvin	Chroma	Gamma
17% heavy dark	6756	4.51	1.78
25% dark gray	6876	5.10	1.81
50% gray	6771	8.48	1.84
75% light gray	6812	10.61	1.84
100% white	6875	11.11	

Average Gamma = 1.82

Profile Statistic:

Note: The deltaE calculation takes the blackpoint into account!
Based on chromatic adaptation Bradford

Color	R	G	B	L	a	b	dE	dE94
0% black	0	0	0	5.5	0.5	-0.6	4.2	4.2
17% heavy dark	45	45	45	27.4	-0.1	0.6	10.1	10.1
25% dark gray	64	64	64	35.4	-0.1	0.1	8.9	8.9
50% gray	128	128	128	60.5	-0.7	1.2	6.6	6.6
75% light gray	192	192	192	81.7	-0.8	1.1	3.7	3.7
100% white	255	255	255	100.0	0.0	0.0	0.0	0.0
red	255	0	0	48.4	67.6	66.1	18.4	10.0
green	0	255	0	89.9	-53.8	97.7	36.6	14.6
blue	0	0	255	30.2	62.5	-114.0	30.2	9.8
cyan	0	255	255	92.4	-31.7	-12.7	26.1	9.3
magenta	255	0	255	55.3	82.6	-71.1	23.4	12.5
yellow	255	255	0	97.5	-15.1	108.8	19.8	4.0
pastell-red	170	85	85	51.5	24.4	12.6	15.0	6.5
pastell-green	85	170	85	69.3	-27.9	37.6	15.7	10.8
pastell-blue	85	85	170	46.6	14.5	-43.6	6.4	5.8
pastell-cyan	85	170	170	70.6	-17.9	-5.5	14.8	9.1
pastell-magenta	170	85	170	53.5	33.7	-31.9	9.0	5.3
pastell-yellow	170	170	85	73.3	-8.7	44.0	6.3	5.6
Average							14.2	7.6
Maximum							36.6	14.6

Metric:

	0%	50%	100%
X	0.6	28.0	98.2
Y	0.7	31.7	110.3
Z	0.7	32.1	114.9
K		6771	6875